

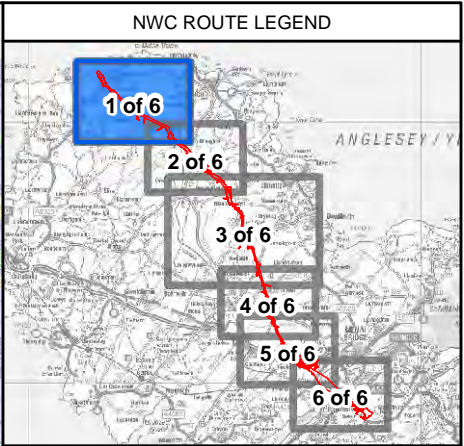
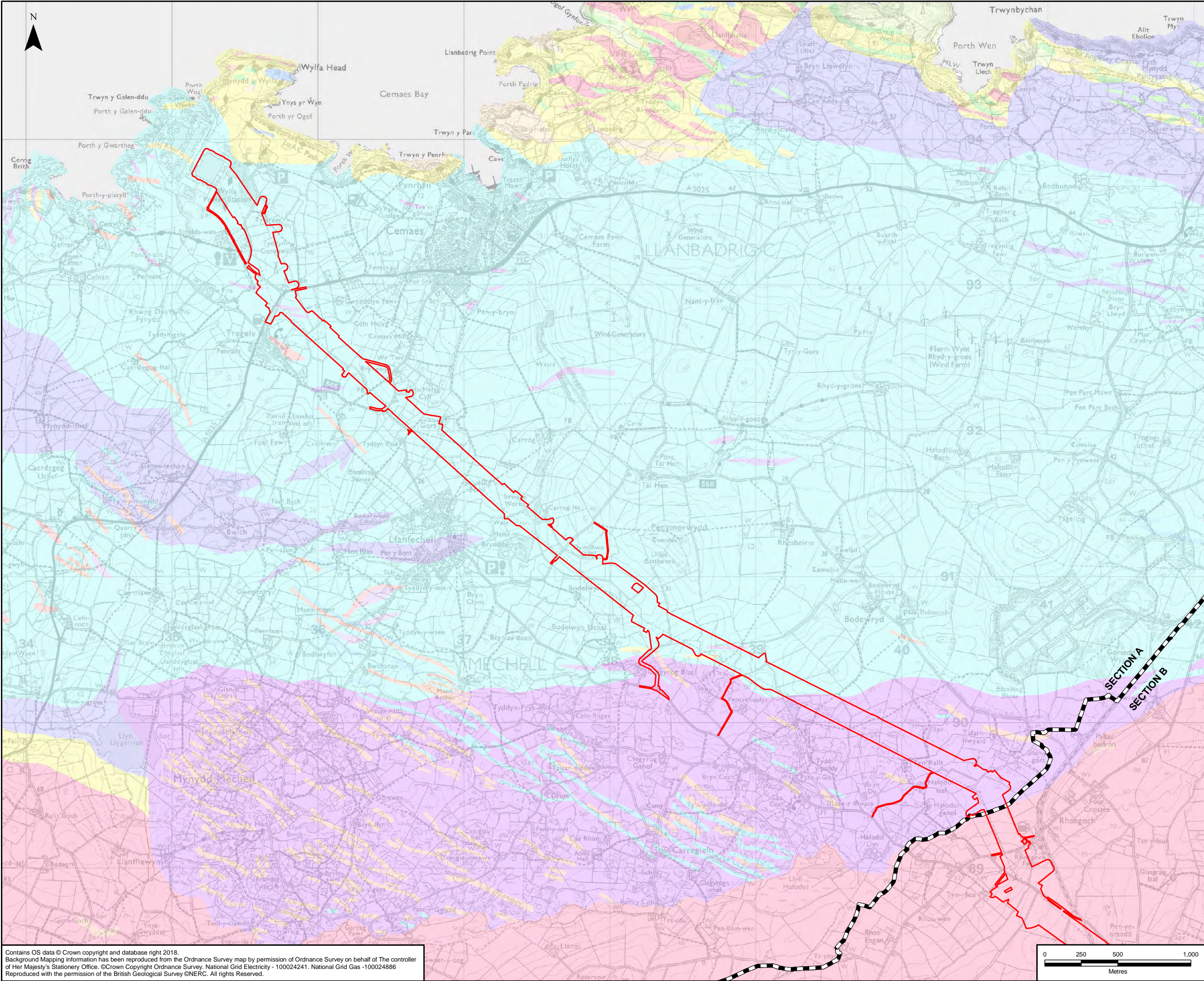
DOCUMENT 5.11.1.1

Bedrock Geology Chapter 11 – Figure 1

National Grid (North Wales Connection Project)

*Regulation 5(2)(a) including (l) and (m) of the Infrastructure Planning
(Applications: Prescribed Forms and Procedure) Regulations 2009*





- LEGEND**
- ORDER LIMITS
 - SECTION CUTLINES
 - BRITISH GEOLOGICAL SURVEY BEDROCK GEOLOGY
 - CENTRAL ANGLESEY SHEAR ZONE AND BERW SHEAR ZONE (UNDIFFERENTIATED) - LIMESTONE AND GRAPHITIC SCHIST
 - CENTRAL ANGLESEY SHEAR ZONE AND BERW SHEAR ZONE (UNDIFFERENTIATED) - SCHIST, GLAUCOPHANE
 - CHURCH BAY TUFFS AND SKERRIES GRITS (UNDIFFERENTIATED) - TUFF AND SANDSTONE
 - GWNA GROUP - MAFITE
 - GWNA GROUP - METABASALTIC-ROCK
 - GWNA GROUP - PELITE
 - GWNA GROUP - QUARTZITE
 - GWNA GROUP - SCHIST
 - NEW HARBOUR GROUP - CALCSILICATE-ROCK
 - NEW HARBOUR GROUP - JASPER
 - NEW HARBOUR GROUP - LAVA
 - NEW HARBOUR GROUP - MICA SCHIST AND PSAMMITE
 - OLD RED SANDSTONE SUPERGROUP - SANDSTONE
 - ORDOVICIAN ROCKS (UNDIFFERENTIATED) - MUDSTONE AND SANDSTONE, INTERBEDDED
 - ORDOVICIAN ROCKS (UNDIFFERENTIATED) - SANDSTONE AND CONGLOMERATE, INTERBEDDED
 - SOUTH STACK FORMATION - PSAMMITE AND PELITE
 - UNNAMED IGNEOUS INTRUSION OF UNKNOWN AGE - FELSITE
 - UNNAMED IGNEOUS INTRUSION OF UNKNOWN AGE - GABBRO, MICROGABBRO AND DIORITE
 - UNNAMED IGNEOUS INTRUSION OF UNKNOWN AGE - SERPENTINITE

A	27/06/2018	ENVIRONMENTAL STATEMENT	JB	WH	NS
Rev	Date	Description	GIS	Chk	App

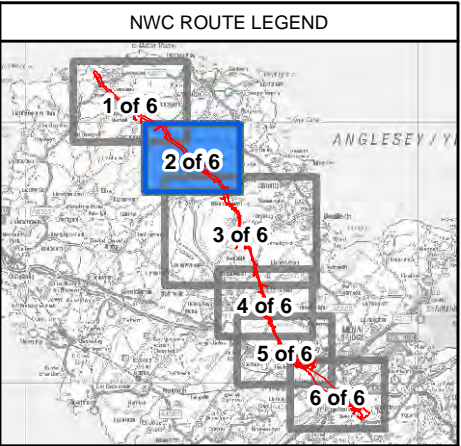
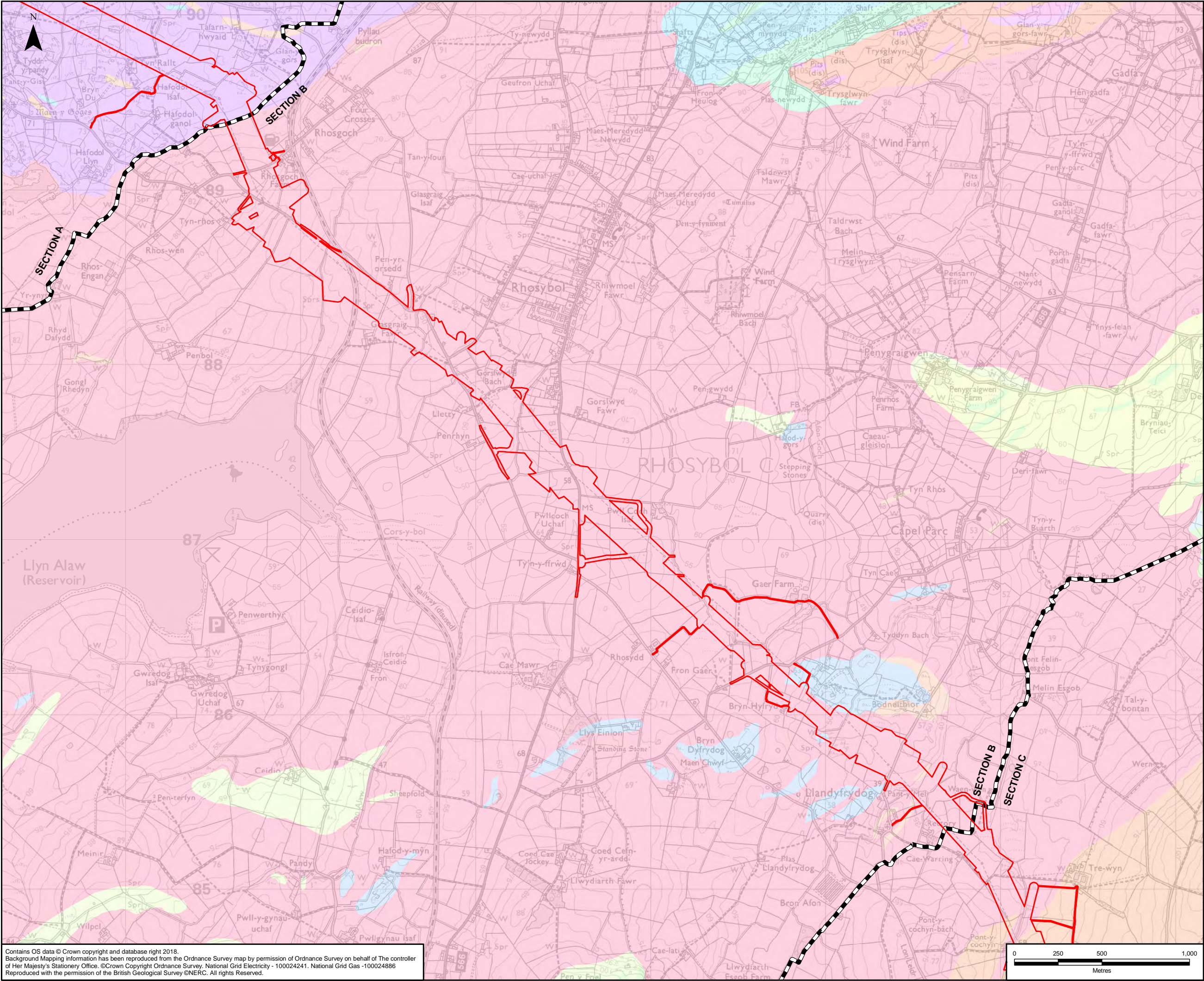
Scheme: NORTH WALES CONNECTION PROJECT

Document Number: 5.11.1.1

Document Title: FIGURE 11.1
BEDROCK GEOLOGY
SECTION A

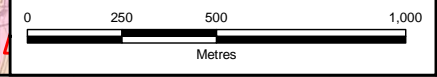
Creator: JB	Date: 27/06/2018	Checker: WH	Date: 27/06/2018	Approver: NS	Date: 27/06/2018
Document Type: FIGURE	Scale: 1:24,000	Format: A3	Sheets: 1 of 6	Rev: A	

Contains OS data © Crown copyright and database right 2018.
Background Mapping information has been reproduced from the Ordnance Survey map by permission of Ordnance Survey on behalf of The controller of Her Majesty's Stationery Office. ©Crown Copyright Ordnance Survey, National Grid Electricity - 100024241, National Grid Gas -100024886
Reproduced with the permission of the British Geological Survey ©NERC. All rights Reserved.

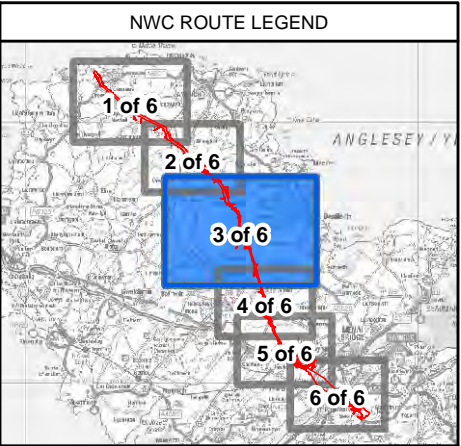
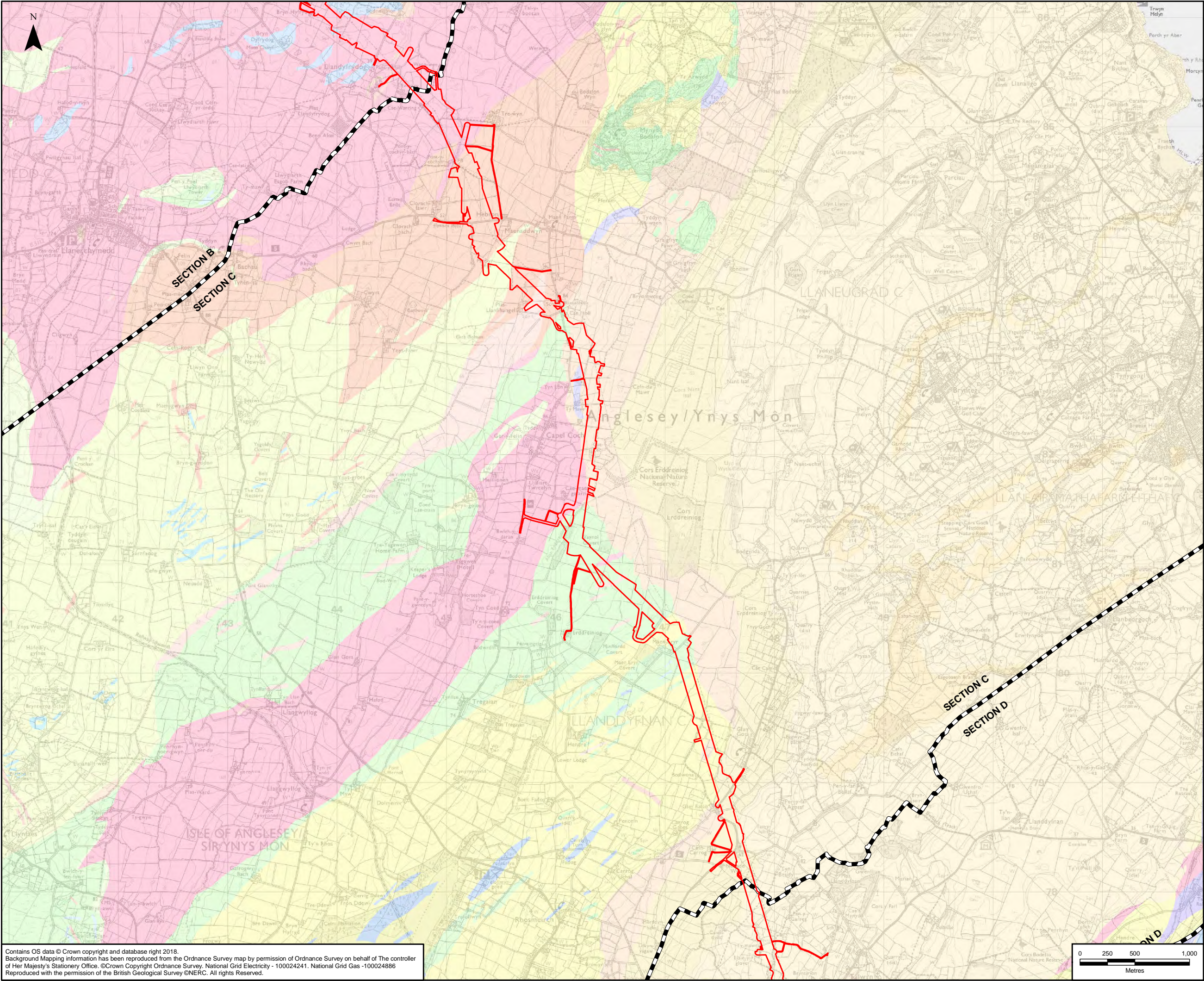


- LEGEND**
- ORDER LIMITS
 - SECTION CUTLINES
 - BRITISH GEOLOGICAL SURVEY BEDROCK GEOLOGY
 - CENTRAL ANGLESEY SHEAR ZONE AND BERW SHEAR ZONE (UNDIFFERENTIATED) - SCHIST, MICA
 - CENTRAL ANGLESEY SHEAR ZONE AND BERW SHEAR ZONE (UNDIFFERENTIATED) - SCHIST, QUARTZ
 - COEDANA COMPLEX - GNEISS, MAFIC
 - COEDANA COMPLEX - GNEISS, MICACEOUS
 - COEDANA COMPLEX - GRANITE, GNEISSOSE
 - COEDANA COMPLEX - HORNFELS
 - COEDANA GRANITE - GRANITE
 - LLANDOVERY ROCKS (UNDIFFERENTIATED) - ARGILLACEOUS ROCK
 - ORDOVICIAN ROCKS (UNDIFFERENTIATED) - MUDSTONE AND SANDSTONE, INTERBEDDED
 - ORDOVICIAN ROCKS (UNDIFFERENTIATED) - SANDSTONE AND CONGLOMERATE, INTERBEDDED
 - SOUTH STACK FORMATION - PSAMMITE AND PELITE
 - UNNAMED IGNEOUS INTRUSION OF UNKNOWN AGE - FELSITE
 - UNNAMED IGNEOUS INTRUSION OF UNKNOWN AGE - GABBRO, MICROGABBRO AND DIORITE
 - UNNAMED IGNEOUS INTRUSION OF UNKNOWN AGE - PICRITE

Contains OS data © Crown copyright and database right 2018.
Background Mapping information has been reproduced from the Ordnance Survey map by permission of Ordnance Survey on behalf of The controller of Her Majesty's Stationery Office. ©Crown Copyright Ordnance Survey, National Grid Electricity - 100024241, National Grid Gas -100024886
Reproduced with the permission of the British Geological Survey ©NERC. All rights Reserved.



A	27/06/2018	ENVIRONMENTAL STATEMENT	JB	WH	NS
Rev	Date	Description	GIS	Chk	App
nationalgrid					
Scheme: NORTH WALES CONNECTION PROJECT					
Document Number: 5.11.1.1					
Document Title: FIGURE 11.1 BEDROCK GEOLOGY SECTION B					
Creator: JB	Date: 27/06/2018	Checker: WH	Date: 27/06/2018	Approver: NS	Date: 27/06/2018
Document Type: FIGURE	Scale: 1:20,000	Format: A3	Sheets: 2 of 6	Rev: A	



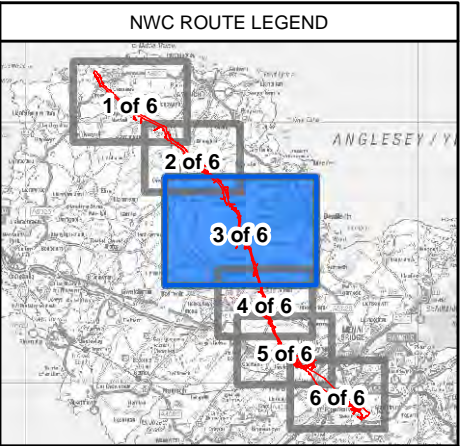
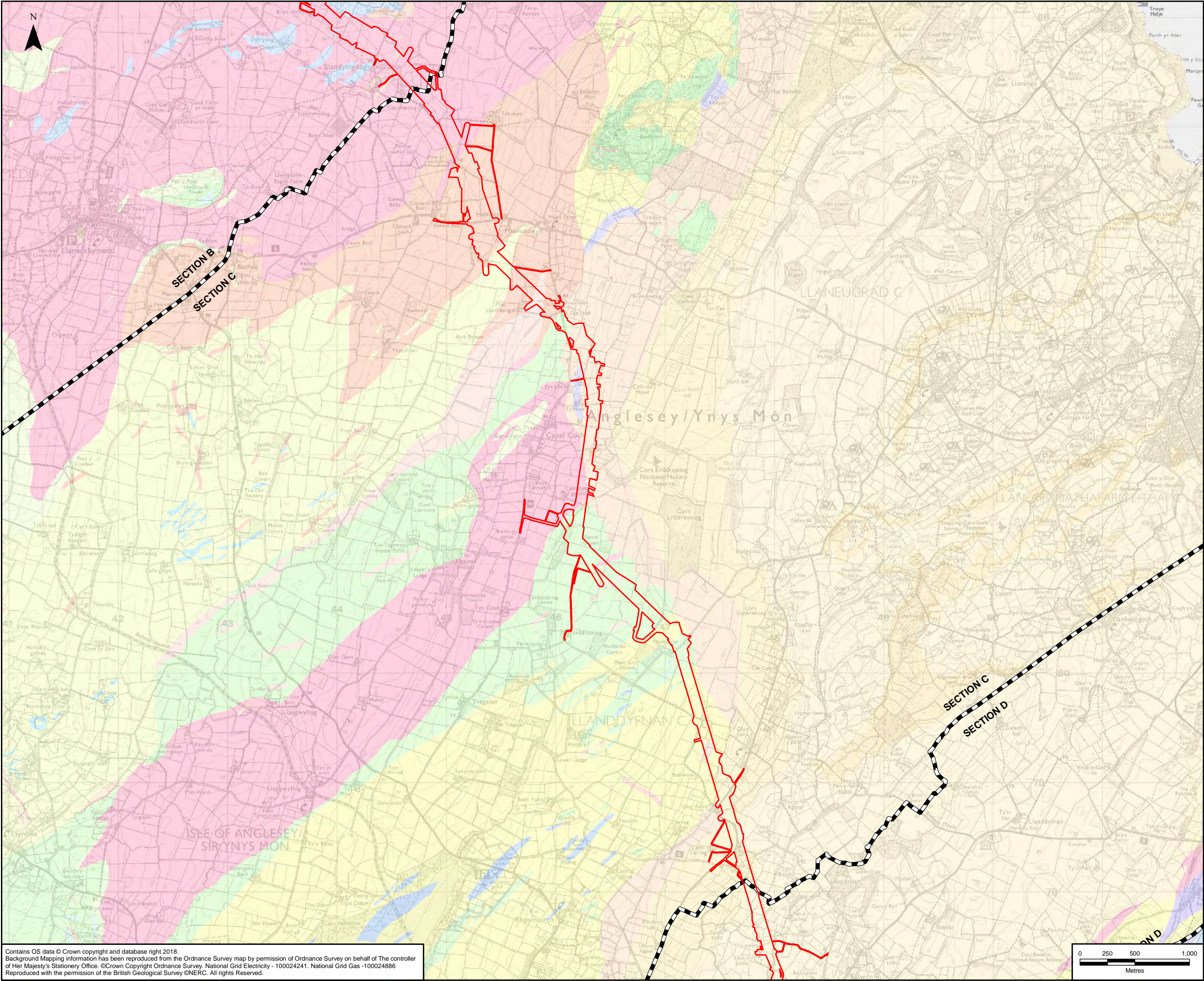
LEGEND				
ORDER LIMITS - OPTION A				
SECTION CUTLINES				
BRITISH GEOLOGICAL SURVEY BEDROCK GEOLOGY				
CEFN MAWR LIMESTONE FORMATION - LIMESTONE				
CENTRAL ANGLESEY SHEAR ZONE AND BERW SHEAR ZONE (UNDIFFERENTIATED) - LIMESTONE AND GRAPHITIC SCHIST				
CENTRAL ANGLESEY SHEAR ZONE AND BERW SHEAR ZONE (UNDIFFERENTIATED) - SCHIST, GLAUCOPHANE				
CENTRAL ANGLESEY SHEAR ZONE AND BERW SHEAR ZONE (UNDIFFERENTIATED) - SCHIST, HORNBLende				
CENTRAL ANGLESEY SHEAR ZONE AND BERW SHEAR ZONE (UNDIFFERENTIATED) - SCHIST, MICA				
CENTRAL ANGLESEY SHEAR ZONE AND BERW SHEAR ZONE (UNDIFFERENTIATED) - SCHIST, QUARTZ				
CHURCH BAY TUFFS AND SKERRIES GRITS (UNDIFFERENTIATED) - TUFF AND SANDSTONE				
CLWYD LIMESTONE GROUP - LIMESTONE				
CLWYD LIMESTONE GROUP - SANDSTONE AND CONGLOMERATE, INTERBEDDED				
COEDANA COMPLEX - GNEISS, MICACEOUS				
COEDANA COMPLEX - HORNFELS				
COEDANA GRANITE - GRANITE				
GWNA GROUP - METABASALTIC-ROCK				
GWNA GROUP - PELITE				
GWNA GROUP - QUARTZITE				
GWNA GROUP - SCHIST				
LLIGWY SANDSTONE FORMATION - SANDSTONE AND CONGLOMERATE, INTERBEDDED				
OLD RED SANDSTONE SUPERGROUP - MUDSTONE, CALCAREOUS				
OLD RED SANDSTONE SUPERGROUP - SANDSTONE				
ORDOVICIAN ROCKS (UNDIFFERENTIATED) - MUDSTONE AND SANDSTONE, INTERBEDDED				
ORDOVICIAN ROCKS (UNDIFFERENTIATED) - SANDSTONE AND CONGLOMERATE, INTERBEDDED				
UNNAMED IGNEOUS INTRUSION OF UNKNOWN AGE - FELSITE				
UNNAMED IGNEOUS INTRUSION OF UNKNOWN AGE - GABBRO, MICROGABBRO AND DIORITE				
UNNAMED IGNEOUS INTRUSION OF UNKNOWN AGE - PICRITE				

A	27/06/2018	ENVIRONMENTAL STATEMENT	JB	WH	NS
Rev	Date	Description	GIS	Chk	App

nationalgrid					
Scheme: NORTH WALES CONNECTION PROJECT					
Document Number: 5.11.1.1					
Document Title: FIGURE 11.1 BEDROCK GEOLOGY SECTION C OPTION A					
Creator: JB	Date: 27/06/2018	Checker: WH	Date: 27/06/2018	Approver: NS	Date: 27/06/2018
Document Type: FIGURE	Scale: 1:32,000	Format: A3	Sheets: 3 of 6 Option A	Rev: A	

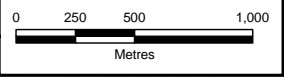
Contains OS data © Crown copyright and database right 2018.
Background Mapping information has been reproduced from the Ordnance Survey map by permission of Ordnance Survey on behalf of The controller of Her Majesty's Stationery Office. © Crown Copyright Ordnance Survey, National Grid Electricity - 100024241, National Grid Gas - 100024886
Reproduced with the permission of the British Geological Survey ©NERC. All rights Reserved.

Document Path: F:\Proposal\3512\North Wales Connection - NG\GIS\02 Maps\Geotech_ES Figs_DCO 2018\GEO_11-1_BEDROCK_GEOLOGY_Plan_Series_20180627_JB.mxd

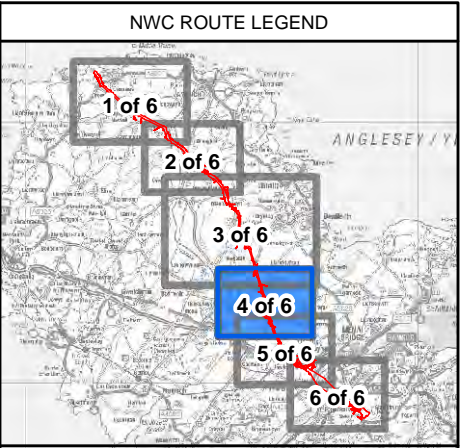
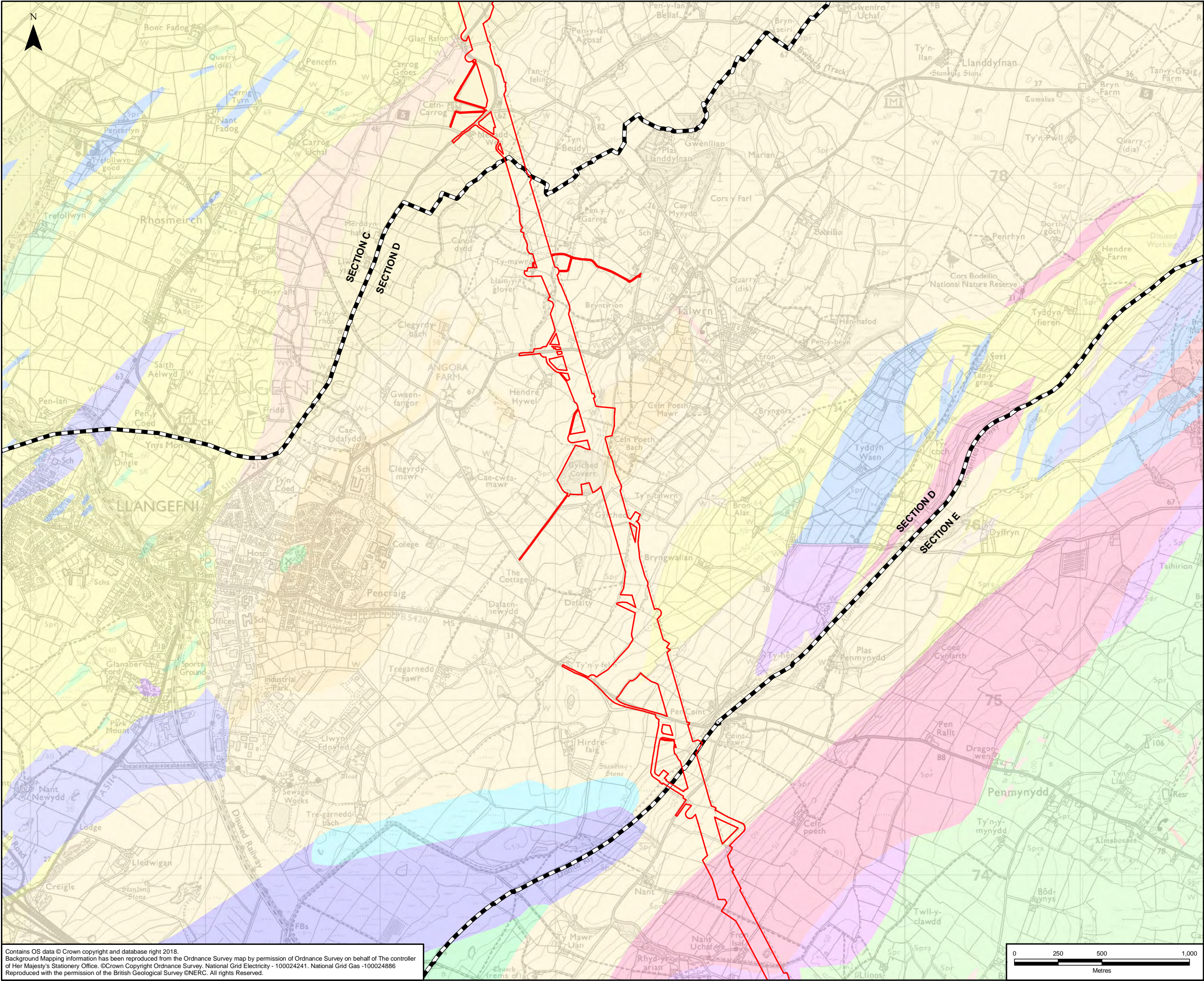


LEGEND				
ORDER LIMITS - OPTION B				
SECTION CUTLINES				
BRITISH GEOLOGICAL SURVEY BEDROCK GEOLOGY				
CEFN MAWR LIMESTONE FORMATION - LIMESTONE				
CENTRAL ANGLESEY SHEAR ZONE AND BERW SHEAR ZONE (UNDIFFERENTIATED) - LIMESTONE AND GRAPHITIC SCHIST				
CENTRAL ANGLESEY SHEAR ZONE AND BERW SHEAR ZONE (UNDIFFERENTIATED) - SCHIST, GLAUCOPHANE				
CENTRAL ANGLESEY SHEAR ZONE AND BERW SHEAR ZONE (UNDIFFERENTIATED) - SCHIST, HORNBLende				
CENTRAL ANGLESEY SHEAR ZONE AND BERW SHEAR ZONE (UNDIFFERENTIATED) - SCHIST, MICA				
CENTRAL ANGLESEY SHEAR ZONE AND BERW SHEAR ZONE (UNDIFFERENTIATED) - SCHIST, QUARTZ				
CHURCH BAY TUFFS AND SKERRIES GRITS (UNDIFFERENTIATED) - TUFF AND SANDSTONE				
CLWYD LIMESTONE GROUP - LIMESTONE				
CLWYD LIMESTONE GROUP - SANDSTONE AND CONGLOMERATE, INTERBEDDED				
COEDANA COMPLEX - GNEISS, MICACEOUS				
COEDANA COMPLEX - HORNFELS				
COEDANA GRANITE - GRANITE				
GWNA GROUP - METABASALTIC-ROCK				
GWNA GROUP - PELITE				
GWNA GROUP - QUARTZITE				
GWNA GROUP - SCHIST				
LLIGWY SANDSTONE FORMATION - SANDSTONE AND CONGLOMERATE, INTERBEDDED				
OLD RED SANDSTONE SUPERGROUP - MUDSTONE, CALCAREOUS				
OLD RED SANDSTONE SUPERGROUP - SANDSTONE				
ORDOVICIAN ROCKS (UNDIFFERENTIATED) - MUDSTONE AND SANDSTONE, INTERBEDDED				
ORDOVICIAN ROCKS (UNDIFFERENTIATED) - SANDSTONE AND CONGLOMERATE, INTERBEDDED				
UNNAMED IGNEOUS INTRUSION OF UNKNOWN AGE - FELSITE				
UNNAMED IGNEOUS INTRUSION OF UNKNOWN AGE - GABBRO, MICROGABBRO AND DIORITE				
UNNAMED IGNEOUS INTRUSION OF UNKNOWN AGE - PICRITE				

Contains OS data © Crown copyright and database right 2018.
Background Mapping information has been reproduced from the Ordnance Survey map by permission of Ordnance Survey on behalf of The controller of Her Majesty's Stationery Office. © Crown Copyright Ordnance Survey, National Grid Electricity - 100024241. National Grid Gas - 100024886
Reproduced with the permission of the British Geological Survey ©NERC. All rights Reserved.



A	27/06/2018	ENVIRONMENTAL STATEMENT	JB	WH	NS
Rev	Date	Description	GIS	Chk	App
nationalgrid					
Scheme: NORTH WALES CONNECTION PROJECT					
Document Number: 5.11.1.1					
Document Title: FIGURE 11.1 BEDROCK GEOLOGY SECTION C OPTION B					
Creator: JB	Date: 27/06/2018	Checker: WH	Date: 27/06/2018	Approver: NS	Date: 27/06/2018
Document Type: FIGURE	Scale: 1:32,000	Format: A3	Sheets: 3 of 6 Option B	Rev: A	



- LEGEND**
- ORDER LIMITS - OPTION A
 - SECTION CUTLINES
 - BRITISH GEOLOGICAL SURVEY BEDROCK GEOLOGY
 - CARBONIFEROUS ROCKS (UNDIFFERENTIATED) - MUDSTONE, SILTSTONE AND SANDSTONE
 - CEFN MAWR LIMESTONE FORMATION - LIMESTONE
 - CENTRAL ANGLESEY SHEAR ZONE AND BERW SHEAR ZONE (UNDIFFERENTIATED) - SCHIST, GLAUCOPHANE
 - CENTRAL ANGLESEY SHEAR ZONE AND BERW SHEAR ZONE (UNDIFFERENTIATED) - SCHIST, HORNBLende
 - CENTRAL ANGLESEY SHEAR ZONE AND BERW SHEAR ZONE (UNDIFFERENTIATED) - SCHIST, MICA
 - CHURCH BAY TUFFS AND SKERRIES GRITS (UNDIFFERENTIATED) - TUFF AND SANDSTONE
 - CLWYD LIMESTONE GROUP - LIMESTONE
 - CLWYD LIMESTONE GROUP - SANDSTONE AND CONGLOMERATE, INTERBEDDED
 - COEDANA COMPLEX - GNEISS, MAFIC
 - GWNA GROUP - IGNEOUS ROCK
 - GWNA GROUP - METABASALTIC-ROCK
 - GWNA GROUP - PELITE
 - GWNA GROUP - QUARTZITE
 - GWNA GROUP - SCHIST
 - LLIGWY SANDSTONE FORMATION - SANDSTONE AND CONGLOMERATE, INTERBEDDED
 - MILLSTONE GRIT GROUP [SEE ALSO MIGR] - MUDSTONE, SILTSTONE AND SANDSTONE
 - OLD RED SANDSTONE SUPERGROUP - SANDSTONE
 - ORDOVICIAN ROCKS (UNDIFFERENTIATED) - MUDSTONE AND SANDSTONE, INTERBEDDED
 - PENNINE COAL MEASURES GROUP - MUDSTONE, SILTSTONE AND SANDSTONE
 - UNNAMED IGNEOUS INTRUSION OF UNKNOWN AGE - GABBRO, MICROGABBRO AND DIORITE

A	27/06/2018	ENVIRONMENTAL STATEMENT	JB	WH	NS
Rev	Date	Description	GIS	Chk	App

nationalgrid

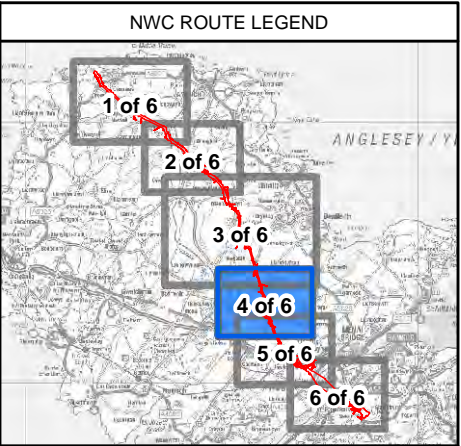
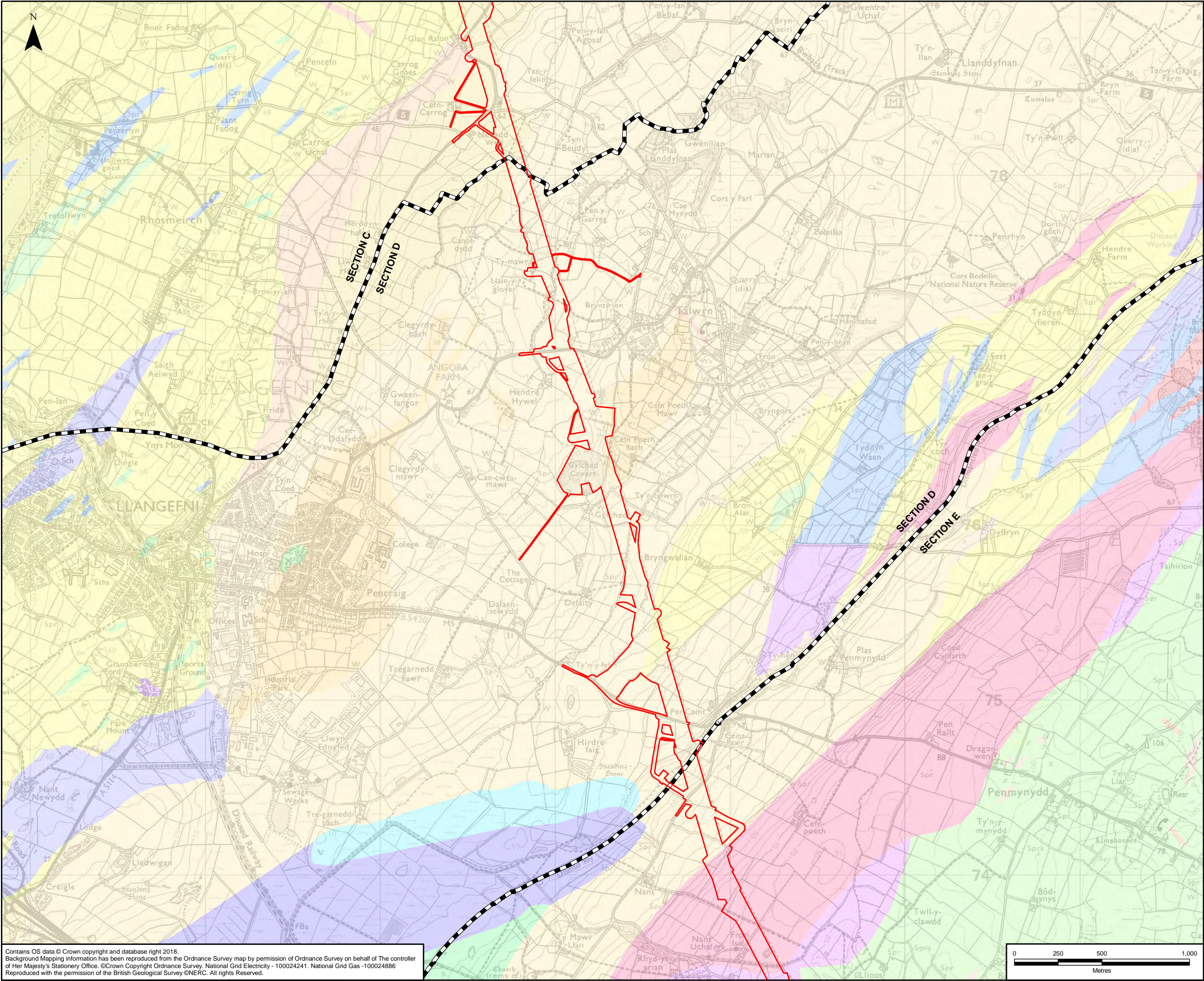
Scheme: NORTH WALES CONNECTION PROJECT

Document Number: 5.11.1.1

Document Title: FIGURE 11.1
BEDROCK GEOLOGY
SECTION D OPTION A

Creator: JB	Date: 27/06/2018	Checker: WH	Date: 27/06/2018	Approver: NS	Date: 27/06/2018
Document Type: FIGURE	Scale: 1:20,000	Format: A3	Sheets: 4 of 6 Option A	Rev: A	

Contains OS data © Crown copyright and database right 2018.
Background Mapping information has been reproduced from the Ordnance Survey map by permission of Ordnance Survey on behalf of The controller of Her Majesty's Stationery Office. ©Crown Copyright Ordnance Survey, National Grid Electricity - 100024241. National Grid Gas -100024886
Reproduced with the permission of the British Geological Survey ©NERC. All rights Reserved.



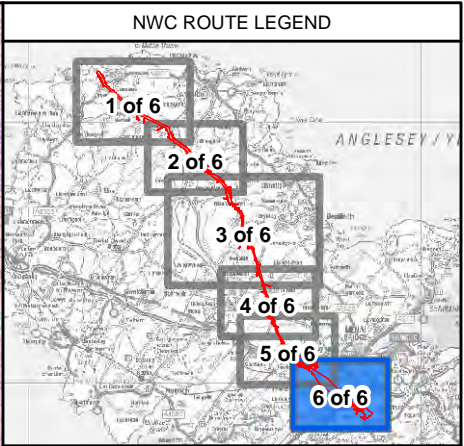
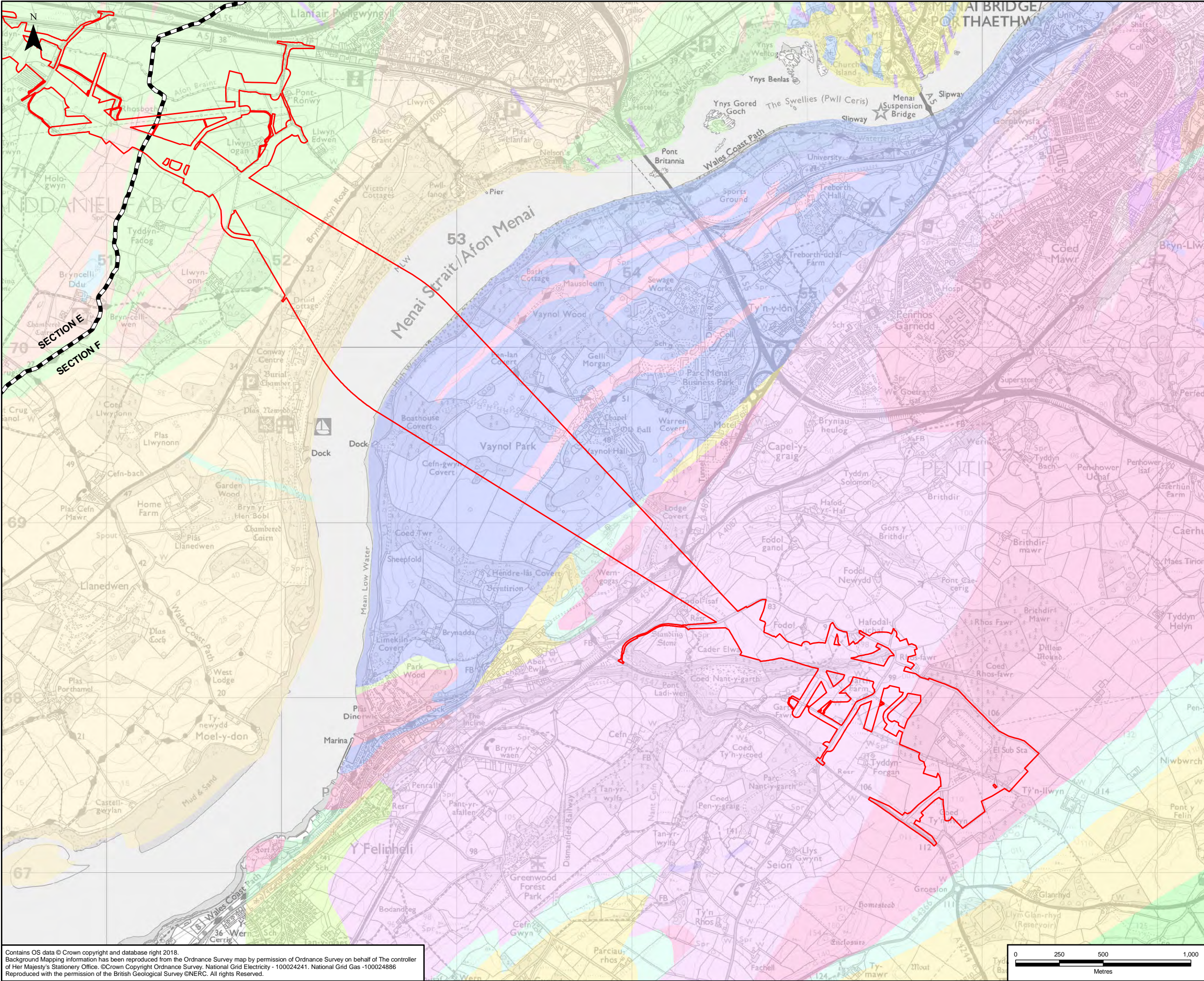
- LEGEND**
- ORDER LIMITS - OPTION B
 - SECTION CUTLINES
 - BRITISH GEOLOGICAL SURVEY BEDROCK GEOLOGY
 - CARBONIFEROUS ROCKS (UNDIFFERENTIATED) - MUDSTONE, SILTSTONE AND SANDSTONE
 - CEFN MAWR LIMESTONE FORMATION - LIMESTONE
 - CENTRAL ANGLESEY SHEAR ZONE AND BERW SHEAR ZONE (UNDIFFERENTIATED) - SCHIST, GLAUCOPHANE
 - CENTRAL ANGLESEY SHEAR ZONE AND BERW SHEAR ZONE (UNDIFFERENTIATED) - SCHIST, HORNBLENDE
 - CENTRAL ANGLESEY SHEAR ZONE AND BERW SHEAR ZONE (UNDIFFERENTIATED) - SCHIST, MICA
 - CHURCH BAY TUFFS AND SKERRIES GRITS (UNDIFFERENTIATED) - TUFF AND SANDSTONE
 - CLWYD LIMESTONE GROUP - LIMESTONE
 - CLWYD LIMESTONE GROUP - SANDSTONE AND CONGLOMERATE, INTERBEDDED
 - COEDANA COMPLEX - GNEISS, MAFIC
 - GWNA GROUP - IGNEOUS ROCK
 - GWNA GROUP - METABASALTIC-ROCK
 - GWNA GROUP - PELITE
 - GWNA GROUP - QUARTZITE
 - GWNA GROUP - SCHIST
 - LLIGWY SANDSTONE FORMATION - SANDSTONE AND CONGLOMERATE, INTERBEDDED
 - MILLSTONE GRIT GROUP [SEE ALSO MIGR] - MUDSTONE, SILTSTONE AND SANDSTONE
 - OLD RED SANDSTONE SUPERGROUP - SANDSTONE
 - ORDOVICIAN ROCKS (UNDIFFERENTIATED) - MUDSTONE AND SANDSTONE, INTERBEDDED
 - PENNINE COAL MEASURES GROUP - MUDSTONE, SILTSTONE AND SANDSTONE
 - UNNAMED IGNEOUS INTRUSION OF UNKNOWN AGE - GABBRO, MICROGABBRO AND DIORITE

Contains OS data © Crown copyright and database right 2018.
Background Mapping information has been reproduced from the Ordnance Survey map by permission of Ordnance Survey on behalf of The controller of Her Majesty's Stationery Office. © Crown Copyright Ordnance Survey, National Grid Electricity - 100024241. National Grid Gas -100024886
Reproduced with the permission of the British Geological Survey ©NERC. All rights Reserved.

Document Path: F:\Proposal\3512\North Wales Connection - NG\GIS\02 Maps\Geotech\ES Figs_DCO 2018\GEO_11-1_BEDROCK_GEOLOGY_Plan_Series_20180627_JB.mxd

A	27/06/2018	ENVIRONMENTAL STATEMENT	JB	WH	NS
Rev	Date	Description	GIS	Chk	App

nationalgrid					
Scheme: NORTH WALES CONNECTION PROJECT					
Document Number: 5.11.1.1					
Document Title: FIGURE 11.1 BEDROCK GEOLOGY SECTION D OPTION B					
Creator: JB	Date: 27/06/2018	Checker: WH	Date: 27/06/2018	Approver: NS	Date: 27/06/2018
Document Type: FIGURE	Scale: 1:20,000	Format: A3	Sheets: 4 of 6 Option B	Rev: A	



LEGEND	
	ORDER LIMITS
	SECTION CUTLINES
BRITISH GEOLOGICAL SURVEY BEDROCK GEOLOGY	
	ALLT LWYD FORMATION - SANDSTONE
	BANGOR FORMATION - CONGLOMERATE
	BANGOR FORMATION - FELSIC TUFF AND FELSIC TUFFITE
	CENTRAL ANGLESEY SHEAR ZONE AND BERW SHEAR ZONE (UNDIFFERENTIATED) - SCHIST, GLAUCOPHANE
	CENTRAL ANGLESEY SHEAR ZONE AND BERW SHEAR ZONE (UNDIFFERENTIATED) - SCHIST, HORNBLLENDE
	CENTRAL ANGLESEY SHEAR ZONE AND BERW SHEAR ZONE (UNDIFFERENTIATED) - SCHIST, MICA
	CENTRAL ANGLESEY SHEAR ZONE AND BERW SHEAR ZONE (UNDIFFERENTIATED) - SCHIST, QUARTZ
	CLWYD LIMESTONE GROUP - LIMESTONE
	FACHWEN FORMATION - SILTSTONE AND LIMESTONE, INTERBEDDED
	GWNA GROUP - METABASALTIC-ROCK
	GWNA GROUP - SCHIST
	LOGGERHEADS LIMESTONE FORMATION - LIMESTONE
	LOGGERHEADS LIMESTONE FORMATION - SANDSTONE
	MENAI STRAITS FORMATION - MUDSTONE AND SANDSTONE
	MINFFORDD FORMATION - FELSIC TUFF AND FELSIC TUFFITE
	MINFFORDD FORMATION - SANDSTONE AND CONGLOMERATE, INTERBEDDED
	NANT FFRANCON SUBGROUP - SILTSTONE
	PADARN TUFF FORMATION - TUFF, FELSIC
	PLAS BRERETON FORMATION - SANDSTONE AND CONGLOMERATE, INTERBEDDED
	RED WHARF LIMESTONE FORMATION - CONGLOMERATE AND [SUBEQUAL/SUBORDINATE] SANDSTONE, INTERBEDDED
	RED WHARF LIMESTONE FORMATION - LIMESTONE
	UNNAMED DYKE, PALAEOGENE - MICROGABBRO
	UNNAMED IGNEOUS INTRUSION OF UNKNOWN AGE - GABBRO, MICROGABBRO AND DIORITE
	UNNAMED IGNEOUS INTRUSION, ORDOVICIAN - GRANITE
	UNNAMED IGNEOUS INTRUSION, ORDOVICIAN - MICROGABBRO

A	27/06/2018	ENVIRONMENTAL STATEMENT	JB	WH	NS
Rev	Date	Description	GIS	Chk	App

nationalgrid									
Scheme: NORTH WALES CONNECTION PROJECT									
Document Number: 5.11.1.1									
Document Title: FIGURE 11.1 BEDROCK GEOLOGY SECTION F									
Creator: JB	Date: 27/06/2018	Checker: WH	Date: 27/06/2018	Approver: NS	Date: 27/06/2018				
Document Type: FIGURE	Scale: 1:20,000	Format: A3	Sheets: 6 of 6	Rev: A					

Contains OS data © Crown copyright and database right 2018.
Background Mapping information has been reproduced from the Ordnance Survey map by permission of Ordnance Survey on behalf of The controller of Her Majesty's Stationary Office. © Crown Copyright Ordnance Survey, National Grid Electricity - 100024241, National Grid Gas - 100024886
Reproduced with the permission of the British Geological Survey ©NERC. All rights Reserved.

Document Path: F:\Proposal\3512\North Wales Connection - NG\GIS\02 Maps\Geotech\ES Figs_DCO 2018\GEO_11-1_BEDROCK_GEOLOGY_Plan_Series_20180627_JB.mxd